
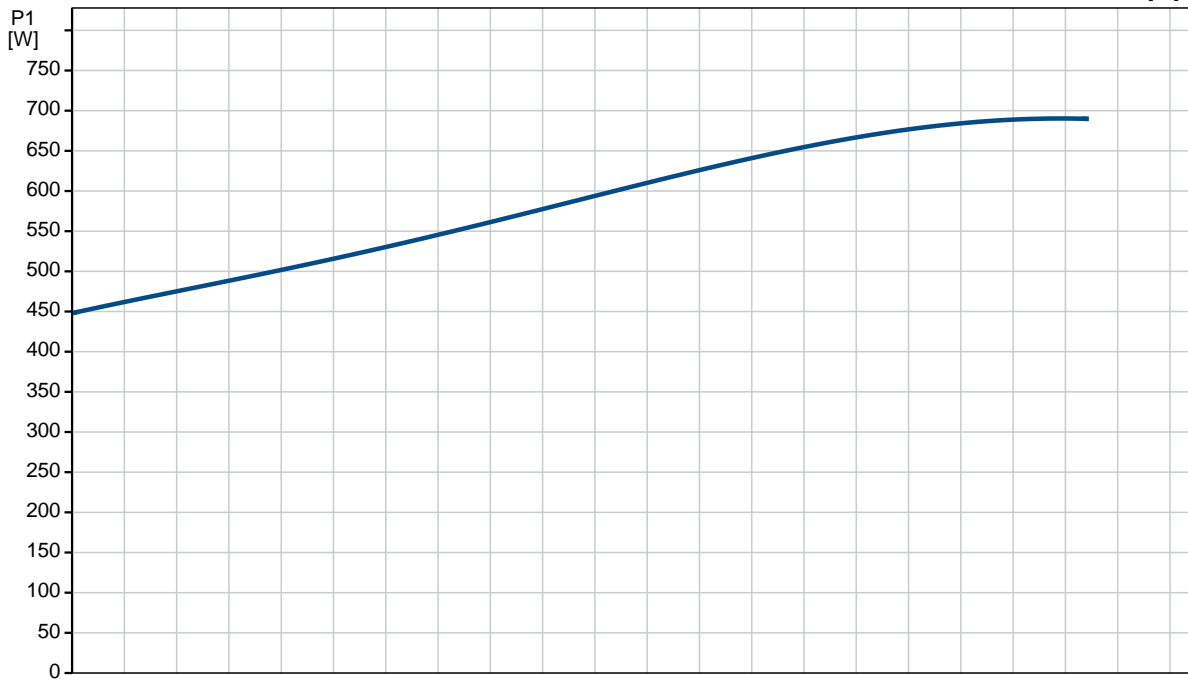
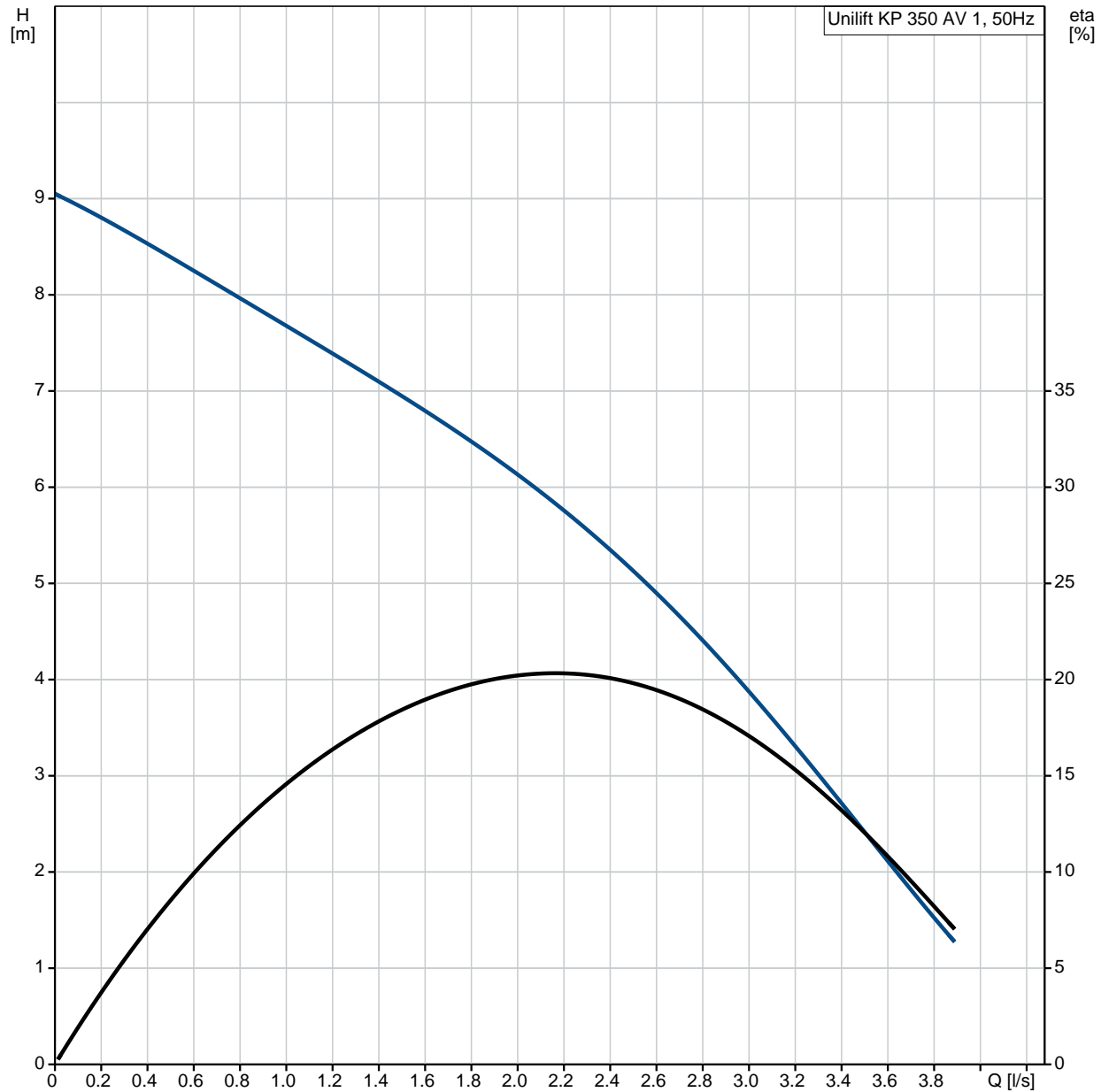


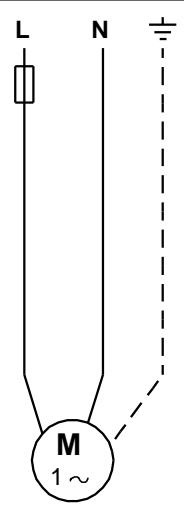
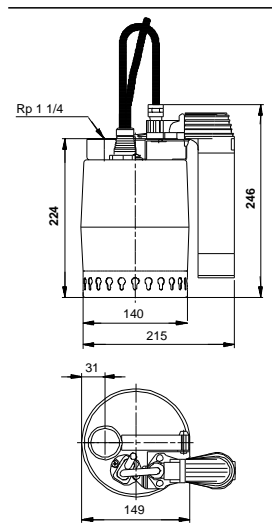
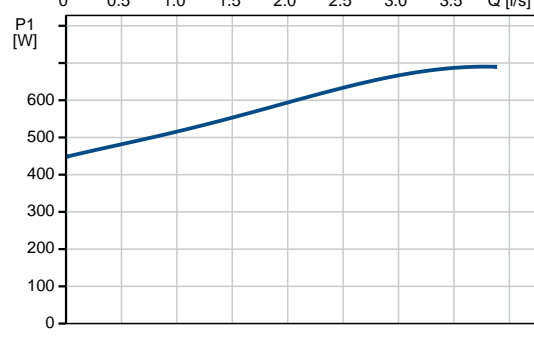
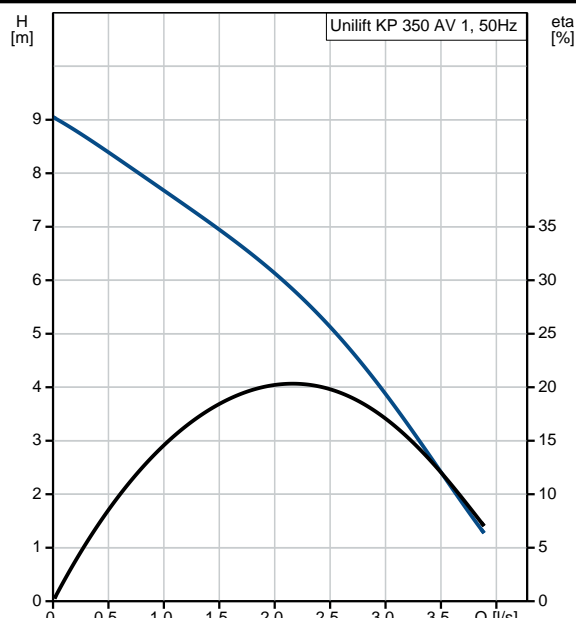
Position	Qty.	Description																				
	1	<p data-bbox="357 163 580 190">Unilift KP 350 AV 1</p>  <p data-bbox="748 595 1232 618" style="text-align: right;">Note! Product picture may differ from actual product</p> <p data-bbox="357 629 670 683">Product No.: 013N1400 Submersible drainage pump</p> <p data-bbox="357 719 887 831">Vertical single-stage stainless steel submersible pump with vertical discharge port and integrated submersible 1-phase canned motor in insulation class F with thermal overload protection.</p> <p data-bbox="357 866 911 978">The pump is fitted with suction strainer and a carrying handle and is supplied with a 5 m mains cable and vertical level switch for automatic start and stop.</p> <p data-bbox="357 1014 927 1099">The impeller is a semi-open impeller for 10 mm free passage suitable for pumping groundwater, surface water, rain water and similar liquids.</p> <p data-bbox="357 1135 924 1189">The pump has a double shaft seal consisting of two lip seals with grease in-between.</p> <p data-bbox="357 1225 927 1337">The pump has an outer casing ensuring continuous cooling of the motor by the pumped liquid. The rotor shaft operates in two maintenance-free carbon bearings cooled by the pumped liquid</p> <p data-bbox="357 1373 876 1400">The motor is filled with a non-toxic motor liquid.</p> <p data-bbox="357 1435 443 1462">Liquid:</p> <table data-bbox="357 1462 954 1547"> <tr> <td>Pumped liquid:</td> <td>Any Newtonian liquid</td> </tr> <tr> <td>Liquid temperature range:</td> <td>0 .. 50 °C</td> </tr> <tr> <td>Density:</td> <td>998.2 kg/m³</td> </tr> </table> <p data-bbox="357 1583 481 1610">Technical:</p> <table data-bbox="357 1610 799 1637"> <tr> <td>Maximum particle size:</td> <td>10 mm</td> </tr> </table> <p data-bbox="357 1673 475 1700">Materials:</p> <table data-bbox="357 1700 927 1874"> <tr> <td>Pump housing:</td> <td>Stainless steel DIN W.-Nr. 1.4301 AISI 304</td> </tr> <tr> <td>Impeller:</td> <td>Stainless steel DIN W.-Nr. 1.4031 AISI 304</td> </tr> </table> <p data-bbox="357 1910 497 1937">Installation:</p> <table data-bbox="357 1937 818 1995"> <tr> <td>Pump outlet:</td> <td>Rp 1 1/4</td> </tr> <tr> <td>Maximum installation depth:</td> <td>2 m</td> </tr> </table> <p data-bbox="357 2031 536 2058">Electrical data:</p> <table data-bbox="357 2058 794 2116"> <tr> <td>Power input - P1:</td> <td>700 W</td> </tr> <tr> <td>Mains frequency:</td> <td>50 Hz</td> </tr> </table>	Pumped liquid:	Any Newtonian liquid	Liquid temperature range:	0 .. 50 °C	Density:	998.2 kg/m ³	Maximum particle size:	10 mm	Pump housing:	Stainless steel DIN W.-Nr. 1.4301 AISI 304	Impeller:	Stainless steel DIN W.-Nr. 1.4031 AISI 304	Pump outlet:	Rp 1 1/4	Maximum installation depth:	2 m	Power input - P1:	700 W	Mains frequency:	50 Hz
Pumped liquid:	Any Newtonian liquid																					
Liquid temperature range:	0 .. 50 °C																					
Density:	998.2 kg/m ³																					
Maximum particle size:	10 mm																					
Pump housing:	Stainless steel DIN W.-Nr. 1.4301 AISI 304																					
Impeller:	Stainless steel DIN W.-Nr. 1.4031 AISI 304																					
Pump outlet:	Rp 1 1/4																					
Maximum installation depth:	2 m																					
Power input - P1:	700 W																					
Mains frequency:	50 Hz																					

Position	Qty.	Description
		<p>Rated voltage: 1 x 220-240 V</p> <p>Rated current: 3.2 A</p> <p>Capacitor size - run: 10 µF/400 V</p> <p>Enclosure class (IEC 34-5): IP68</p> <p>Insulation class (IEC 85): F</p> <p>Length of cable: 5 m</p> <p>Type of cable plug: SCHUKO</p> <p>Others:</p> <p>Net weight: 7.5 kg</p> <p>Gross weight: 8 kg</p> <p>Shipping volume: 0.013 m³</p> <p>Country of origin: HU</p> <p>Custom tariff no.: 84137021</p>

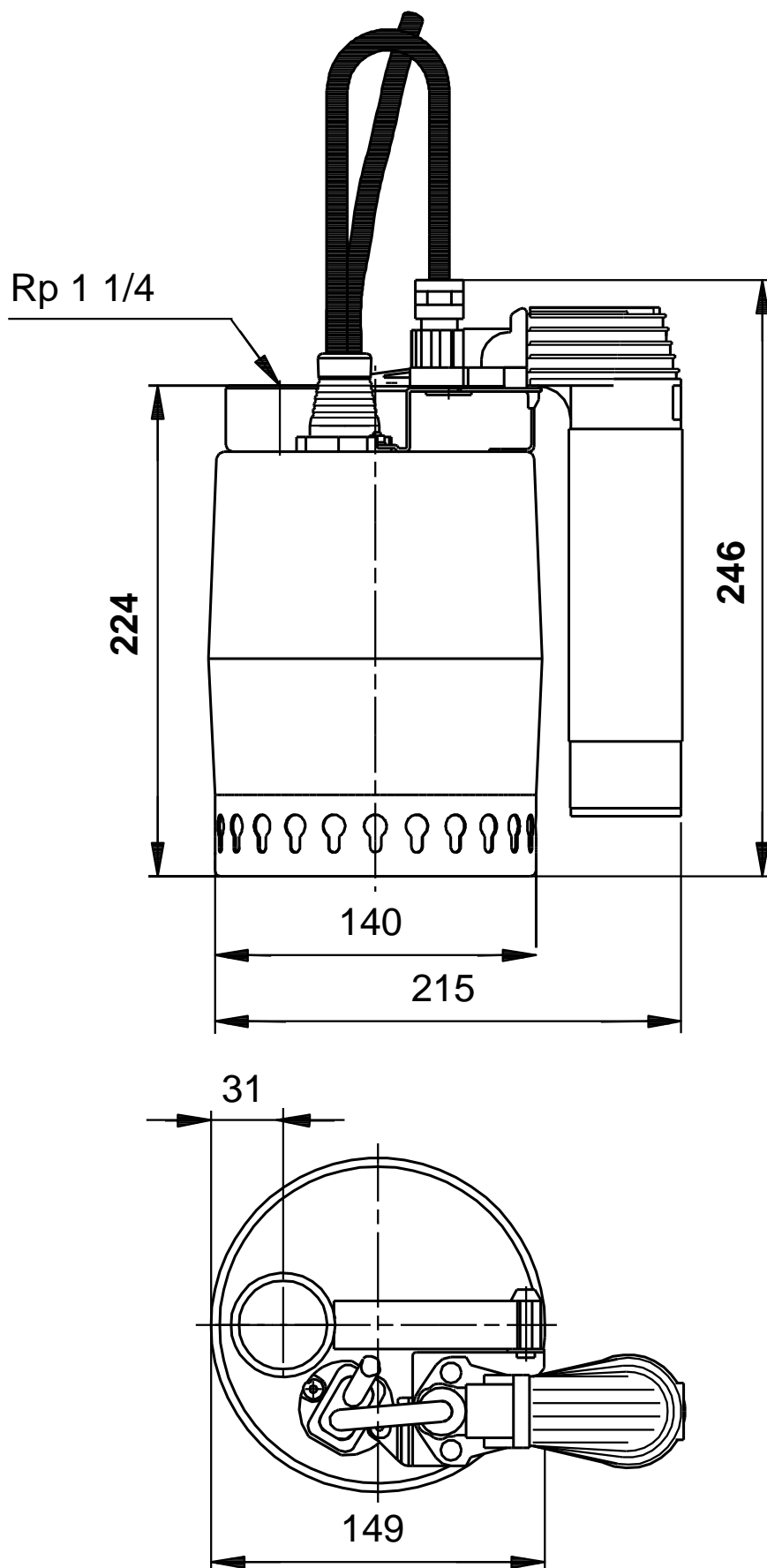
013N1400 Unilift KP 350 AV 1 50 Hz



Description	Value
General information:	
Product name:	Unilift KP 350 AV 1
Product No:	013N1400
EAN number:	5700393433236
Technical:	
Max flow:	3.89 l/s
Head max:	9 m
Maximum particle size:	10 mm
Model:	A
Materials:	
Pump housing:	Stainless steel
	DIN W.-Nr. 1.4301
	AISI 304
Impeller:	Stainless steel
	DIN W.-Nr. 1.4031
	AISI 304
Installation:	
Pump outlet:	Rp 1 1/4
Maximum installation depth:	2 m
Liquid:	
Pumped liquid:	Any Newtonian liquid
Liquid temperature range:	0 .. 50 °C
Density:	998.2 kg/m ³
Electrical data:	
Power input - P1:	700 W
Mains frequency:	50 Hz
Rated voltage:	1 x 220-240 V
Rated current:	3.2 A
Capacitor size - run:	10 µF/400 V
Enclosure class (IEC 34-5):	IP68
Insulation class (IEC 85):	F
Motor protec:	CONTACT
Thermal protec:	internal
Length of cable:	5 m
Type of cable plug:	SCHUKO
Controls:	
Level switch:	vertical level switch
Others:	
Net weight:	7.5 kg
Gross weight:	8 kg
Shipping volume:	0.013 m ³
Country of origin:	HU
Custom tariff no.:	84137021

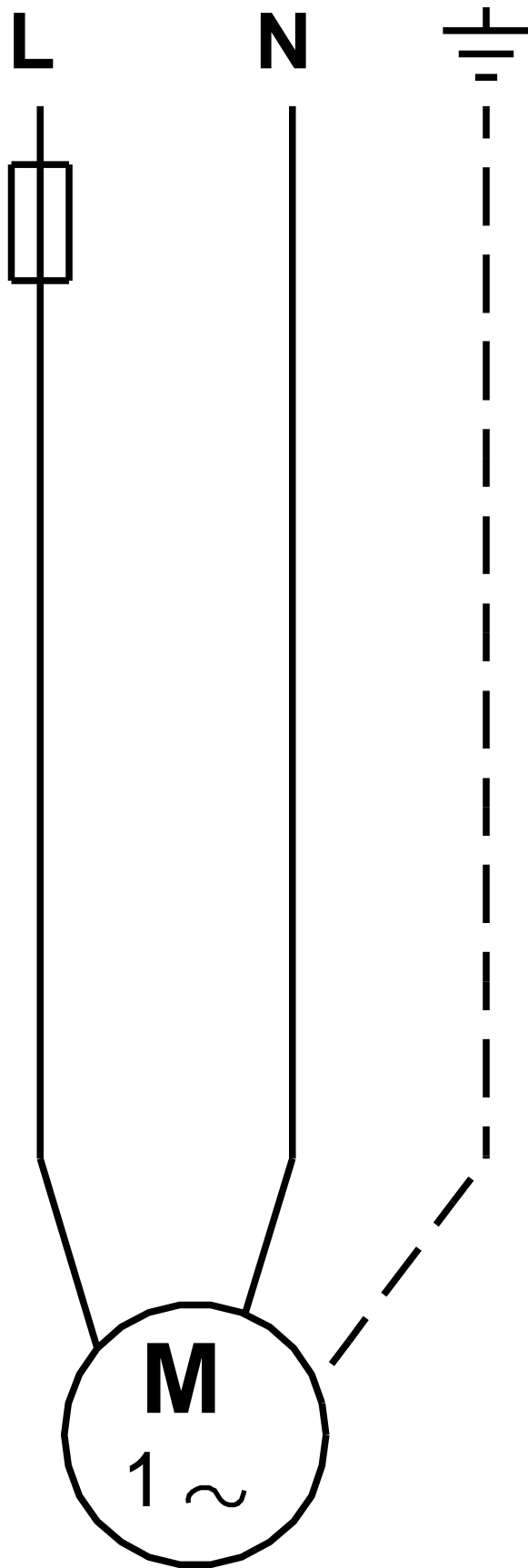


013N1400 Unilift KP 350 AV 1 50 Hz



Note! All units are in [mm] unless others are stated.
Disclaimer: This simplified dimensional drawing does not show all details.

013N1400 Unilift KP 350 AV 1 50 Hz



Note! All units are in [mm] unless others are stated.